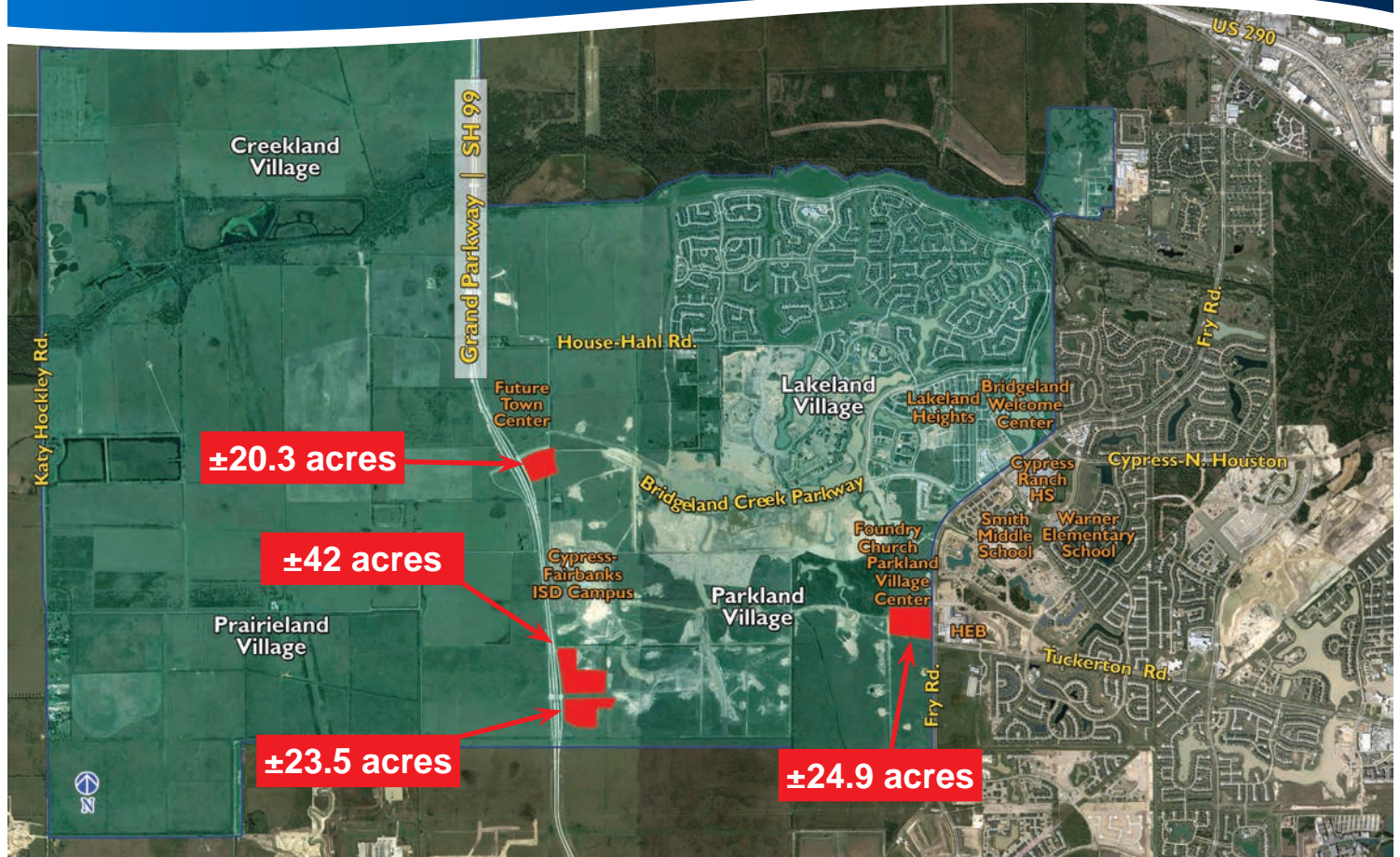


Big Box Retail Opportunities

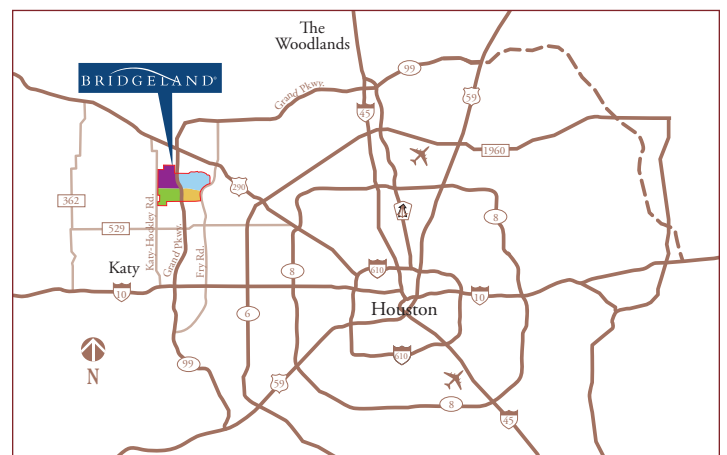
CYPRESS, TX

BRIDGELAND®



Property Features

- Big Box retail opportunities in Houston's third largest master planned community
- ±20.3 acres – SE corner of Grand Parkway and Bridgeland Creek Parkway
- ±42.0 acres – NE corner of Grand Parkway and Tuckerton Road
- ±23.5 acres – SE corner of Grand Parkway and Tuckerton Road
- ±24.9 acres – NW corner of Fry Road and Tuckerton Road
- Bridgeland is the leading master planned community in northwest Houston with 11,400 acres, approximately 8,500 current residents and 65,000 residents upon completion.



RIP REYNOLDS

VP, Leasing & Commercial Land
281.719.6125
Rip.Reynolds@howardhughes.com

GRANT GOLD

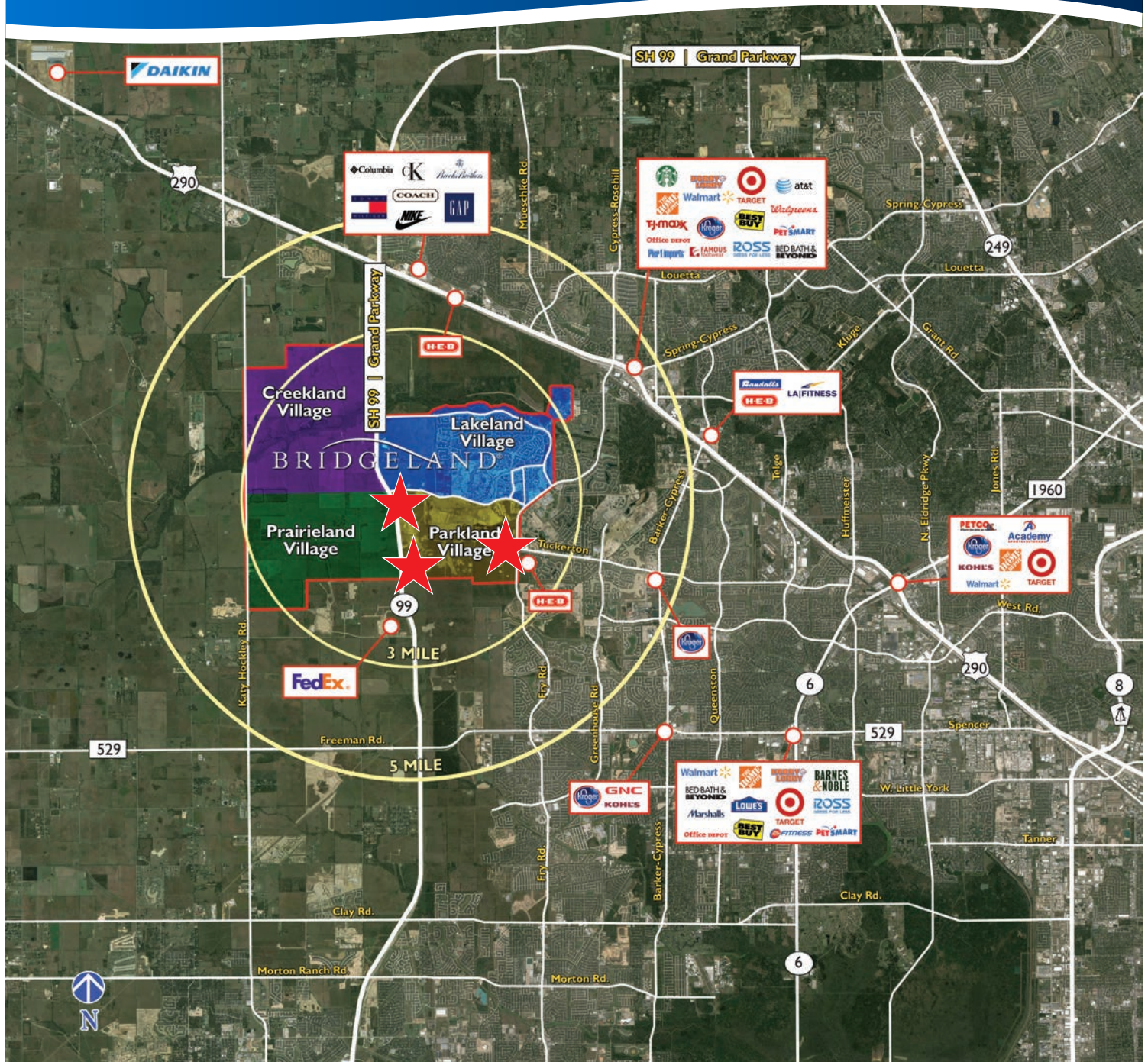
Senior Manager, Leasing
281.719.6137
Grant.Gold@howardhughes.com

Howard Hughes
THE HOWARD HUGHES CORPORATION®

Big Box Retail Opportunities

CYPRESS, TX

BRIDGELAND®



RIP REYNOLDS

VP, Leasing & Commercial Land
281.719.6125
Rip.Reynolds@howardhughes.com

GRANT GOLD

Senior Manager, Leasing
281.719.6137
Grant.Gold@howardhughes.com

Howard Hughes
THE HOWARD HUGHES CORPORATION®



LOCATION

Bridgeland, a 11,400-acre master planned community, is located approximately 30 miles northwest of downtown Houston.

FACTS

Approximately 8,500 people now live in Bridgeland, with an estimated 65,000 residents upon completion. Bridgeland is comprised of four villages, and approximately 20,000 homes are projected.

Amenities

3000 ACRES
of open space

±60 ACRES
of trails

900 ACRES
of lakes

400 ACRES
of parks

Green space within
1/4 MILE
from every home

Cypress Creek Nature Trail

currently two-and-a-half miles, will stretch for six miles upon completion

House Hahl Trail

with fitness stations and areas of reforestation

Cypress Lake

Kayaking, paddle boating and catch-and-release fishing

Festival Park

for community events, concerts and other activities

LAKELAND ACTIVITY CENTER

SWIMMING COMPLEX

with a junior Olympic-size pool, diving well with two platforms, spray park and two 30-ft tower slides

TENNIS COURTS

PICNIC TABLES

PLAYGROUND | PARK

6000 SQ FT ACTIVITY CENTER

with full-time Activities Director

LAKELAND VILLAGE PARK

20-ACRE PARK

located in Hidden Creek with a plethora of unique features

heated lap pool (open year-round)

spray park | playgrounds

tennis courts | basketball court

walking trails | playfields

skate park | fenced dog park

fishing pier | canoe/kayak launch

(with boats available for use)

Highly-Rated Cy-Fair ISD Schools

Pope Elementary, Smith Middle School, Cy-Ranch High School

Coming Soon:

CFISD Educational Village Multi-School Campus

127-acres, 1 million sq ft of learning space, elementary through high school; high school to open in the fall of 2017

RIP REYNOLDS

VP, Leasing & Commercial Land

281.719.6125

Rip.Reynolds@howardhughes.com

GRANT GOLD

Senior Manager, Leasing

281.719.6137

Grant.Gold@howardhughes.com

Howard Hughes
THE HOWARD HUGHES CORPORATION®

05/2017

Plans and renderings are artist's concepts and are subject to change. All information provided regarding this property is from sources deemed to be reliable; however, no warranty of representation is made to the accuracy thereof.

The Howard Hughes Corporation owns, manages and develops commercial, residential and mixed-use real estate throughout the U.S. Our properties include master planned communities, operating properties, development opportunities and other unique assets spanning 14 states from New York to Hawai'i. The Howard Hughes Corporation is traded on the New York Stock Exchange as HHC with major offices in New York, Columbia, MD, Dallas, Houston, Las Vegas and Honolulu.